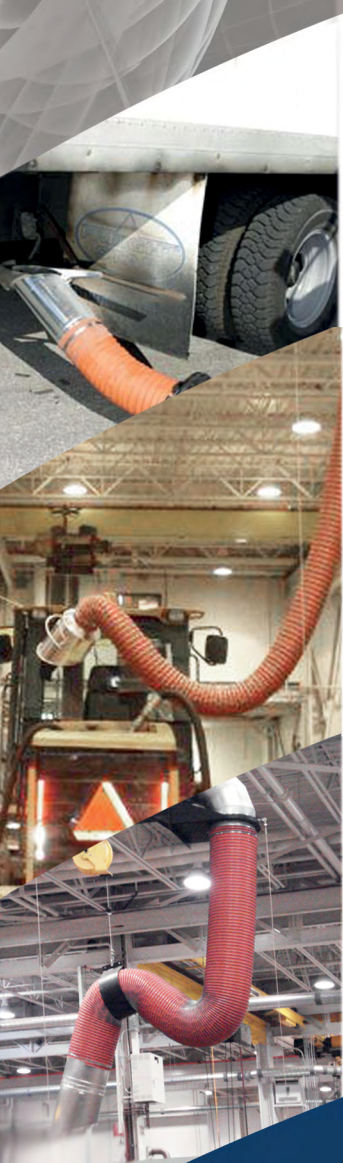


MAXIDROP™

AQC SOURCE CAPTURE EQUIPMENT

HOSE DROP FOR FUME AND GAS EXHAUST SYSTEMS

- Easy to use and install
- Small cars to diesel trucks application
- Spring balancer with ratchet lock system
- Multiple hose diameter and temperature options



DUST COLLECTION
& SOURCE CAPTURE

*Superior technology generating
substantial operating savings*

MAXIDROP™

High-Productivity Innovative Products

Hose drop for fume and gas exhaust systems

The MAXIDROP hose drop system is an interesting alternative to hose reels. Designed to work with small cars right up to large diesel engines, MAXIDROP assures the hoses will not be crushed by workers or vehicles since they are lifted and secured by the balancer. The ratchet lock system on the balancer allows the hose to be pulled at the exact length required. Single or dual hose equipped systems can work with different diameters, lengths and temperature ratings. A variety of tailpipe adaptors are also offered depending on the application.



A Leading-Edge, High-Performance Company

The AQC Dust manufacturer fabricates a full range of safe, industrial dust collectors, as well as dust and smoke capture equipment and high pressure industrial dampers at the leading edge of air control technologies based on more than 30 years of experience in the field.

AQC's strength lies in its innovative products designed and developed to generate substantial savings throughout their entire operating life.

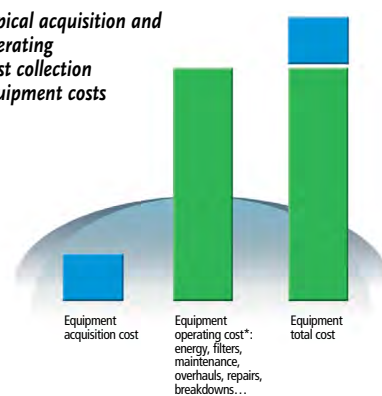
AQC is renowned for its technological innovation, safe and sophisticated equipment design, as well as its robust and precise product manufacturing. AQC stands out with its unique design of the baffles inside dust collectors making filter cleaning easy and a cartridge holder design that provides maximum filter surface, which enhances filter performance. The ultra-smooth concept inside AQC fume arms makes them maintenance-free and the durability of the heavy duty industrial dampers exceed expectations.

In short, AQC equipment is designed and built to generate substantial operating savings in terms of time, money and energy. This translates to major reductions in operating costs – from 10 to 20% – throughout the equipment's operating life. This scale of savings can represent a significant portion of the equipment's total purchase price. Companies looking to maximize their profitability should factor in these savings when purchasing equipment.

The unique design and manufacturing of AQC equipment generates significant savings for various reasons:

- Substantial increase in the duration of filters.
- Lower energy consumption during years of use.
- Significantly less maintenance (easy to clean, robust manufacturing, a minimum number of more reliable and durable parts).
- Reduced operating costs (less frequent overhauls, lack of or minimum down time, etc.).
- Lower administrative costs (coordination, follow-ups, supervision) due to much less frequent breakdowns.
- Safe design can prevent serious or even fatal accidents.
- Increased comfort and productivity of personnel.

Typical acquisition and operating dust collection equipment costs



The acquisition cost is just one part of the equation. It's the total cost including the operating cost ***throughout the life cycle of the equipment** that must be kept low. This is what AQC delivers. The advanced technology, design, robustness, durability and safety of AQC products generate major savings during the equipment's entire life cycle.

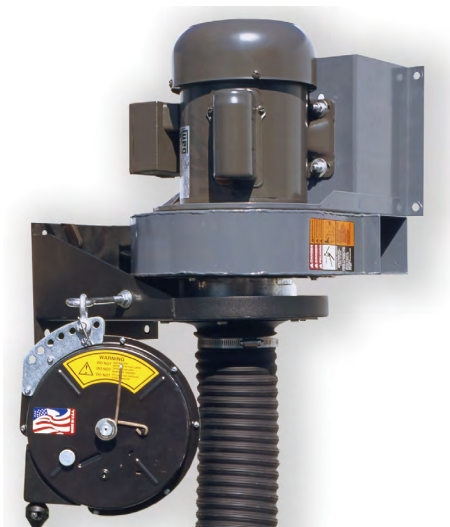
MAXIDROP VERSATILITY FOR MULTIPLE APPLICATIONS

Suitable for any application from ATV repair facilities to large truck maintenance shops

- Balancer ensures the flexible hose does not rest on the floor and risks being crushed
- Available with direct mounted fan
- Can also be used for removing harsh fumes in tanks or containers
- Hoses available in different diameters, temperature ratings and lengths
- Wide variety of tailpipe adapters
- Full kit for easy installation

TYPICAL MAXIDROP ARRANGEMENTS

Direct mounted fan



Wall cleat and pulley system



**Double drop
MAXIREACH
double pivot
extension boom**



**Single drop
MAXIRAIL with
sliding trolley**



**Exhaust to
main fan
with central
ducting**



OUTSTANDING MAXIDROP FEATURES



How to choose your hose

CHART 1

Vehicle type	Recommended air volume CFM / l/s	Recommended hose diameter in/mm	Recommended hose temperature °F/°C
Small to full size cars	250-300/115-140	3-4/76-102	200-300/93-149
Performance sports cars	450-500/210-235	4-5/102-127	500-700/260-371
Large pick-up trucks/SUV's	350-400/165-190	4-5/102-127	500-700/260-371
Diesel trucks/tractor trailers	700-800/330-375	6/152	500-700/260-371
Heavy duty off road machinery	1000-1200/470-565	8/203	900-1200/482-648

Note: Some engines may exhaust fumes at temperatures higher than 900 °F (480 °C). Consult with engine or vehicle manufacturer's specifications.

Note on flexible hoses: Fumes vacuumed into flexible hoses are cooled with drawn ambient air. Combination of extreme high and low temperature hoses are available in order to minimize operating costs. Call factory or representative for details.

MAXIDROP TYPICAL INSTALLATIONS

1 Ceiling truss installation with braided rope, pulleys and wall cleats



2 Ceiling truss installation with spring balancer without support bracket



3 Typical installation with support bracket



4 Typical installation with support bracket and fan



Hose temperature selection

CHART 2

Model	Maximum temperature	Fabric	Usage	Diameters
HO-240-X	240-300 °F/115-149 °C	Cotton neoprene with exterior helix	Cars-light trucks	3" to 8" (76 to 203 mm)
HO-700-X	700-780 °F/371-416 °C	E-Glass with V4A Wire	High revolution engines, diesel trucks	3" to 8" (76 to 203 mm)
HO-900-X	900-1000 °F/482-537 °C	E-glass polyurethane with exterior helix	Quarry and heavy duty machinery	3" to 8" (76 to 203 mm)

AQC will not be held liable if flexible hose selected is used for higher exhaust temperatures than the tolerance indicated in chart 2. Specify length required. Crush resistant hoses are available for specific applications. Contact factory for details.

HO-240-X



HO-700-X

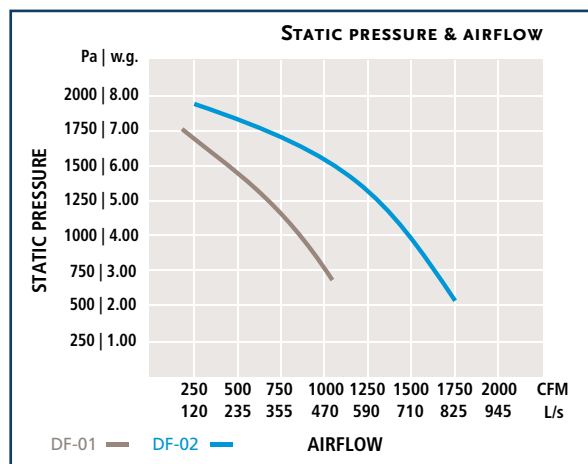
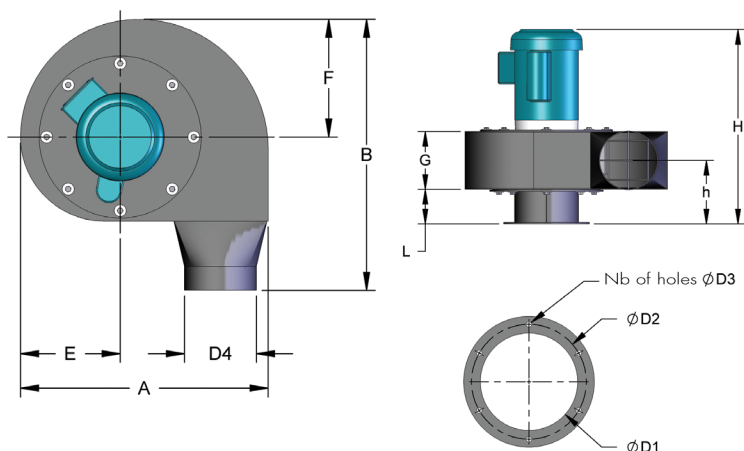


HO-900-X



MAXIDRIVE FANS (3450 RPM)

Backward inclined (recommended for 6" and 8" diameter arms [152 mm and 203 mm])



Fan dimensions

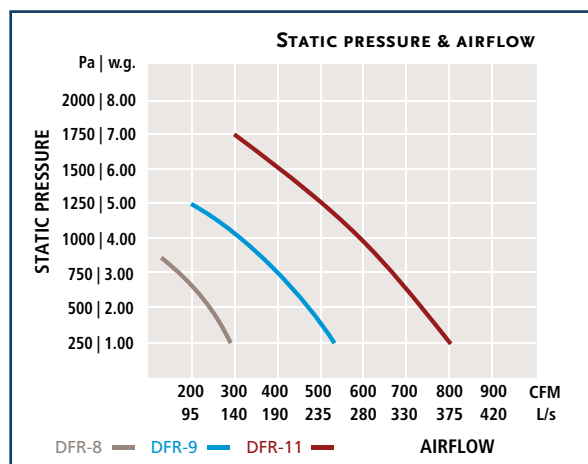
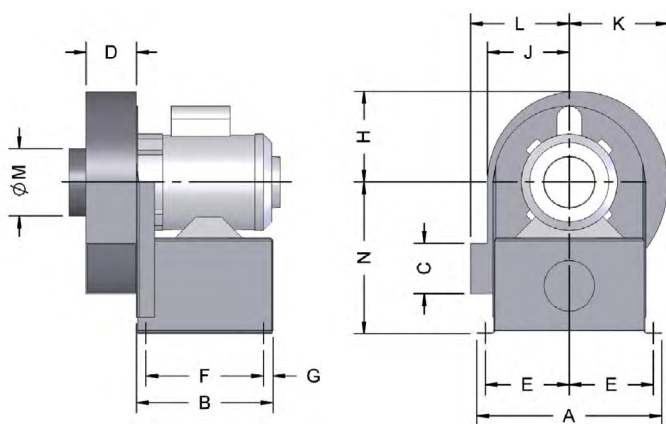
CHART 3

Model	Power HP	Dimensions in / mm													Weight lbs/kg
		A	B	E	F	H	L	G	h	d1	d2	d3	d4	Nb	
DF-01	1/0.75	20.2/513	22.6/574	8.3/211	9.8/249	21.1/536	3.9/99	5.9/150	6.9/175	6.2/157	7.69/195	0.4/10	6/152	6	70/31.8
DF-02	2/1.50	22.7/577	24.8/630	9.2/234	11/279	24.8/630	4.9/124	6.3/160	7.8/188	8/203	9.69/246	0.4/10	8/203	8	82/37.2

Electrical note: Fan motors indicated above are available in all voltages. Specify on order.

Technical note: Refer to MAXIDRIVE fan leaflet for complete data.

Radial blade (recommended for 3", 4" and 5" diameter arms [76 mm, 102 mm and 127 mm])



Fan dimensions

CHART 4

Model	HP/KW	Dimensions in / mm													Weight lbs/kg
		A	B	C	D	E	F	G	H	J	K	L	M	N	
DFR-08	0.33/0.25	11/279	8/203	3/76	3/76	5/127	7/178	0.5/13	5.4/137	4.9/124	5.9/149	5.9/149	4/102	8.5/216	44/20
DFR-09	0.33/0.25	12.13/308	8/203	3.5/89	3.5/89	5.6/142	7/178	0.5/13	6.4/162	5.8/147	6.88/175	6.8/171	5/127	9.4/239	46/21
DFR-11	1/0.75	14.75/375	9/229	4/102	3.5/89	6.9/175	7.5/191	0.75/19	7.3/185	6.5/165	8/203	7.63/194	6/152	11.8/300	62/28

Electrical note: Fan motors indicated above are available in 115/1/60.

TAILPIPE ADAPTORS & NOZZLES

All rubber nozzles are crush resistant

NZR-TPA 3000



Y adaptors designed for split tailpipes of up to 3" (76 mm) in diameter. Y hoses are each 24" long. Note: To be used temporarily, not to be permanently attached to hose reel.

ZR-YA 300-400



Y adaptors designed for split tailpipes of 3" (76 mm) or 4" (102 mm) in diameter. Y hoses are each 48" long. Note: To be used temporarily, not to be permanently attached to hose reel.

NZR-F 300-350-400



Straight adaptors with hook and chain. Measurements of 2,5" (64 mm), 3" (76 mm) or 3,5" (89 mm) in diameter.

NZR-F 475-575



3" x 6" (76 mm x 152 mm) or 3" x 8" (76 mm x 203 mm) oval shaped for dual tailpipes. Attached to tailpipes by means of hook and chain.

NZR-TWINFLAP



4" x 9" (102 mm x 229 mm) for side by side tailpipes rubber nozzle equipped with slotted closing flaps minimizing air loss.

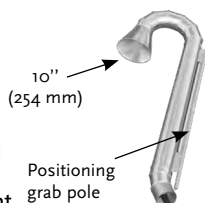
NZR-RA 250-300



Fits most cars and light trucks tailpipes sizes. Attached to tailpipe by means of cuffs and slots.

Galvanized steel tailpipe adaptors (also available in stainless steel)

NZR-TPA 3000



Cane nozzle for diesel truck stacks and chimneys. Light weight aluminum. Usually fitted onto NZA-DC-(06 or 08) adaptor 6" or 8" (152 mm/203 mm). Note: cane nozzle is to be used temporarily, not to be permanently attached to hose reel.

NZ-POLE-SQ-HO

Telescopic aluminium pole 8' to 16' (2.4 m to 4.9 m) with grab hook. Recommended when hose and nozzle are fully wrapped around the drum and are out of arm's reach. Nozzle is fitted with 2" (51 mm) eyebolt for grab hook and pole insert.

NZG-OE-HO



NZG-SD

Spring loaded damper type. Available for all hose diameters.



NZG-PEA

Spring loaded damper type with port emission analyzer. Available for all hose diameters.



NZG-VG

Vise-grip attachment available with or without spring type loaded damper. Available for all hose diameters. Required for high RPM testing facilities.



NZG-OE

Open nozzle adaptor. No tailpipe attachment included. Available for all hose diameters.



Optional: Rag stop 1/2" x 1/2" (13 x 13 mm) wire mesh

Note on flexible hoses: Fumes vacuumed into flexible hoses are cooled with drawn ambient air. Combination of extreme high and low temperature hoses are available in order to minimize operating costs. Call factory or representative for details.

YOUR MAXIDROP HOSE DROP SPECIFICATION**1. Hose drop:**

Flexible hose support sling with tangle free turnbuckle, hose clamps

2. Hose drop with lifting device by means of:

- a) Rope and pulleys ☐
- b) Single balancer ☐
- c) Double balancer ☐

3. Hose diameter:

- a) 3" (76 mm) ☐
- b) 4" (102 mm) ☐
- c) 5" (127 mm) ☐
- d) 6" (102 mm) ☐
- e) 8" (102 mm) ☐

4. Hose length:

- a) 16' (4.9 M) ☐ b) 25' (7.6 M) ☐

5. Hose model:

- a) HO-240-X ☐
- b) HO-700-X ☐
- c) HO-900-X ☐

6. Hose drop should include :

- a) Support bracket for hose drop only ☐
- b) Support bracket for hose drop with exhaust fan ☐

7. Hose drop fan model:

- a) DF-01 ☐
- b) DF-02 ☐
- c) DF-08 ☐
- d) DF-09 ☐
- e) DF-11 ☐

8. Hose drop should include a tailpipe adaptor model:

- a) NZR-TPA 3000 ☐
- b) ZR-YA 300 ☐
- c) ZR-YA 400 ☐
- d) NZR-F 300 ☐
- e) NZR-F 350 ☐
- f) NZR-F 400 ☐
- g) NZR-F 475 ☐
- h) NZR-F 575 ☐
- i) NZR-TWINFLAP ☐
- j) NZR-RA 250 ☐
- k) NZR-RA 300 ☐
- l) NZR-TPA 3000 ☐
- m) NZ-POLE-SQ-HO ☐
- n) NZG-OE-HO ☐
- o) NZG-SD ☐
- p) NZG-PEA ☐
- q) NZG-VG ☐
- r) NZG-OE ☐

9. Hose drop should include:

Balancer mounted micro-switch for automatic fan start/stop (starter and transformer not included).

☐**Note:** Specifications listed above may be modified to suit application. Contact AQC or representative for information.**Your AQC representative is:****DUST COLLECTION
& SOURCE CAPTURE**

660 rue de la Sablière, Bois-des-Filion (Québec) Canada J6Z 4T7
 Phone. : **1-866-629-4356** • Fax : (450) 621-6677
 Web site : www.aqcdust.com • e-mail : info@aqcdust.com