



DUST COLLECTION  
& SOURCE CAPTURE

Owner's manual for installation,  
use and maintenance



**MAXIROLL™**

**MAXICART™**

This manual is property of the owner. Leave with the unit when set-up and start-up are complete.  
AQC Dust Collecting Systems inc. reserves the right to change design and specifications without prior notice.

## INDEX

<b>1</b>	<b>Introduction</b>	<b>3</b>
<b>2</b>	<b>Information on the MAXIROLL and Maxicart portable filtration units</b>	<b>3</b>
<b>3</b>	<b>MAXIROLL Presentation</b>	<b>4</b>
3.1	Each MAXIROLL unit includes	4
<b>4</b>	<b>MAXICART presentation</b>	<b>5</b>
4.1	Each MAXICART unit includes	5
<b>5</b>	<b>Normal use for MAXIROLL / MAXICART</b>	<b>6</b>
<b>6</b>	<b>MAXIROLL components</b>	<b>7</b>
<b>7</b>	<b>MAXICART components</b>	<b>8</b>
<b>8</b>	<b>MAXIROLL technical specifications</b>	<b>9</b>
<b>9</b>	<b>MAXICART technical specifications</b>	<b>11</b>
<b>10</b>	<b>Installation</b>	<b>12</b>
10.1	Inspection of goods	12
10.2	Necessary tools	13
<b>11</b>	<b>Electrical connection on MAXIROLL / MAXICART</b>	<b>15</b>
<b>12</b>	<b>Performance</b>	<b>15</b>
12.1	Check list	15
12.2	Performance instructions (pulse cleaning system)	15
12.3	Compressed air cleaning	15
<b>13</b>	<b>Replacement/cleaning of MAXIROLL / MAXICART filters</b>	<b>16</b>
13.1	Replacement/cleaning of MAXIROLL aluminum spark trap filter	17
13.2	Replacement/cleaning of MAXICART aluminum spark trap filter	17
13.4	Replacement of MAXIROLL / MAXICART filter cartridge	18
13.5	Replacement of charcoal filter/MAXIROLL	19
13.6	Replacement of charcoal filter/MAXICART	19
13.7	Replacement of HEPA filter/MAXIROLL (optional)	20
13.8	Replacement of HEPA filter/MAXICART (optional)	20
<b>14</b>	<b>Maintenance and inspection</b>	<b>21</b>
<b>15</b>	<b>Troubleshooting MAXIROLL / MAXICART</b>	<b>22</b>
<b>16</b>	<b>Warranty</b>	<b>23</b>
<b>17</b>	<b>Limitation of liability</b>	<b>24</b>
<b>18</b>	<b>Applicability</b>	<b>24</b>
<b>19</b>	<b>Governing law</b>	<b>24</b>

## 1 INTRODUCTION

This present manual refers to the MAXIROLL and MAXICART portable filtration units. It includes important information concerning the installation, use and maintenance of your units. Read this manual thoroughly and apply the directives and procedures. Staff and personnel using the system will have to be trained on safety measures and maintenance instructions.



### WARNING!

The dust or pollutant to be filtered may not be suitable for the MAXIROLL or MAXICART. Ensure the unit selected is adequate for your application. Contact A.Q.C. Inc. if you have any doubt in regard to the use of your extension swing boom. **Not following directives and procedures could cause injuries or property damages.**

## 2 INFORMATION ON THE MAXIROLL AND MAXICART PORTABLE FILTRATION UNITS

Model: \_\_\_\_\_ Serial number: \_\_\_\_\_

Delivery date: \_\_\_\_\_ Date of installation: \_\_\_\_\_

Name of customer: \_\_\_\_\_

Address: \_\_\_\_\_

Accessories: \_\_\_\_\_

Other: \_\_\_\_\_

### 3 MAXIROLL PRESENTATION

The MAXIROLL portable filtration unit is a single cartridge dust collector designed to capture and filter welding smoke and fine volatile dust coming from sanding or buffing processes. The upflow dust collector offers high efficiency while requiring low energy consumption. The cartridge is cleaned by using compressed air contained in the reserve air tank. The MAXIROLL collector is widely used in areas where dust and airborne pollutants are a nuisance. Main applications are welding, buffing, sanding, grinding processes as well as pharmaceutical and food grade applications. The MAXIROLL unit stores dust in the drawer at the bottom of the unit.

#### 3.1 Each MAXIROLL unit includes:

- Painted steel cabinet
- 1 HP direct drive fan/motor, 115/1/60 (other voltages are available)
- Side access door
- Two (2) dust collector drawers
- Spark arrestor aluminum filter
- Spun bond polyester cartridge
- Charcoal filter (polyester fabric) Sound insulating foam
- 15' (4,6m) electrical cord with three (3) prong plug
- ON/OFF switch
- Two (2) 5" casters (non-swivel) and two (2) 3" casters (swivel) with foot brakes
- Cabinet grab handle
- Push button for air pulse and cartridge cleaning
- Reserve air tank
- 1/4" NPT for compressed air line

##### 3.1.1 MAXIROLL units may also have the following optional equipment :

- LED light in MAXAIR fume arm hood
- HEPA filter
- Activated charcoal filter (granular)
- Automatic pulse cartridge cleaning

The MAXIROLL unit is shipped fully assembled except for the installation of the MAXAIR fume arm if ordered with the unit.

## 4 MAXICART PRESENTATION

The MAXICART portable filtration unit is a double cartridge dust collector designed to capture and filter welding smoke and fine volatile dust coming from sanding or buffing processes. The upflow dust collector offers high efficiency while requiring low energy consumption. The cartridge is cleaned by using compressed air contained in the reserve air tank. The MAXICART collector is widely used in areas where dust and airborne pollutants are a nuisance. Main applications are welding, buffing, sanding, grinding processes as well as pharmaceutical and food grade applications. The MAXICART units stores dust in the drawer at the bottom of the unit.

### 4.1 Each MAXICART unit includes:

- Painted steel cabinet
- 3 HP direct drive fan/motor, voltage as per customer's request
- Side access door
- Dust collector drawer
- Spark arrestor aluminum filter
- Two (2) cartridges (polyester or cellulose)
- Charcoal filter (polyester fabric)
- Sound insulating foam
- 15' (4,6m) electrical cord (no plug)
- ON/OFF switch
- Two (2) 5" casters (non-swivel) and two (2) 3" casters (swivel) with foot brakes
- Cabinet grab handle
- Push button for air pulse and cartridge cleaning
- Reserve air tank
- 1/4" NPT for compressed air line

#### 4.1.1 MAXICART units may also have the following optional equipment :

- LED light in MAXAIR fume arm hood
- HEPA filter
- Activated charcoal filter (granular)
- Automatic pulse cartridge cleaning

The MAXICART unit is shipped fully assembled except for the installation of the MAXAIR fume arm(s) if ordered with the unit.

## 5 NORMAL USE FOR MAXIROLL/MAXICART

The MAXIROLL and MAXICART units are designed to remove dust from the worker's breathing zone resulting from a fabrication process. Each portable dust collector is built to follow existing requirements concerning interior air quality in industrial facilities. The unit should not serve any other application without the approval of A.Q.C. Inc.



### **WARNING!**

Flammable or explosive dusts and solvents present a fire or explosion hazard within the collector. Under no circumstances, those pollutants should be filtered by the collector unless it has been designed to that effect and equipped with an explosion relief venting system or fire extinguishing device. This is the reason why special attention is required with the handling or use of dust collecting equipment in contact with flammable or explosive dusts and solvents. Any burning or flammable material such as a spark created by metal grinding, lit cigarettes, spark, etc. should not be introduced within the collector where it could cause a fire or explosion.



### **WARNING!**

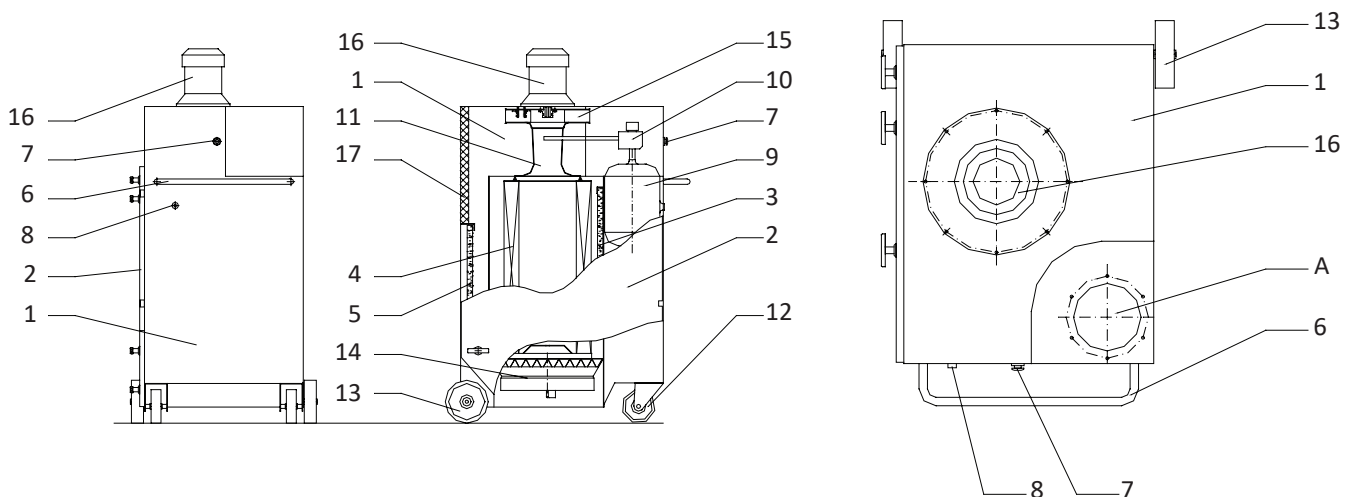
**THIS UNIT SHOULD NOT BE USED FOR METAL CUTTING OR GOUGING.** Such operations create a lot of sparks. Not following this warning could start a fire in the unit.

**Note:** these units are not designed to be left outside.

## 6 MAXIROLL COMPONENTS

1. Welded steel cabinet with powder coat paint
2. Access door to internal components with Duro-Dyne type handles for air tight seal.
3. Aluminum pre-filter for sparks and larger particles.
4. Main cartridge for finer dusts and smoke
5. Polyester charcoal filter to reduce odors
6. Cabinet grab handle
7. Push button for pulse cleaning
8. Compressed air connection (1/4" NPT)
9. Compressed air tank
10. Pneumatic valve
11. Venturi
12. Swivel casters with foot brakes
13. Rear casters (fixed)
14. Dust drawer equipped with a rack and mounted on rails. Locking mechanism for proper cartridge adjustment
15. Aluminum impeller, spark proof, backward inclined design.
16. Motor
17. Foam sound insulation

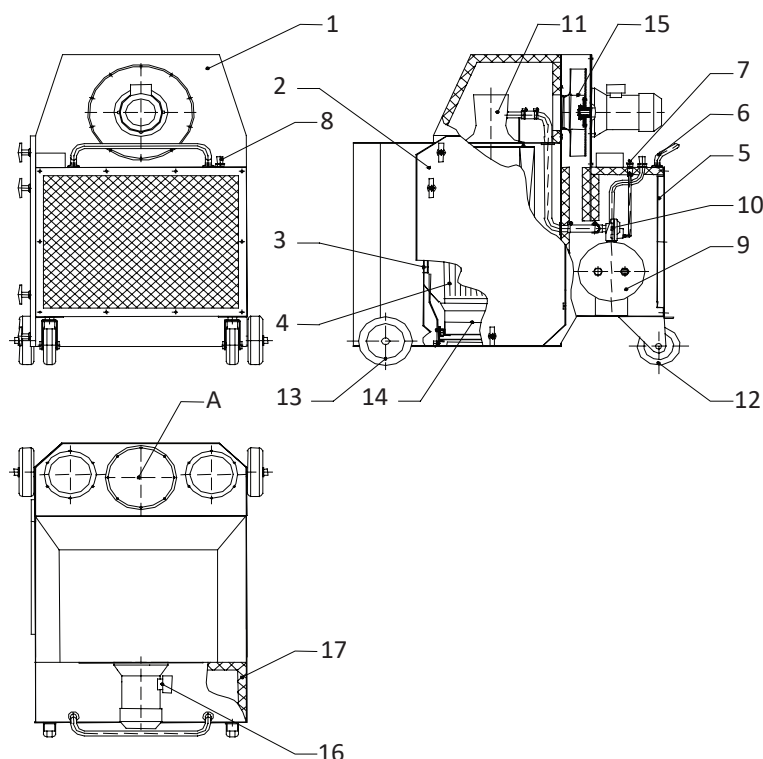
Each unit is equipped with a starter and overload protection.



## 7 MAXICART COMPONENTS

1. Welded steel cabinet with polyurethane paint
2. Access door to internal components with Duro-Dyne type handles for air tight seal.
3. Aluminum pre-filter for sparks and larger particles.
4. Two(2) main cartridges for finer dusts and smoke
5. Polyester charcoal filter to reduce odors
6. Cabinet grab handle
7. Push button for pulse cleaning
8. Compressed air connection (1/4" NPT)
9. Compressed air tank
10. Pneumatic valve
11. Venturi
12. Swivel casters with foot brakes
13. Rear casters (fixed)
14. Dust drawer equipped with a rack and mounted on rails. Locking mechanism for proper cartridge adjustment
15. Aluminum impeller, spark proof, backward inclined design.
16. Motor
17. Foam sound insulation

**Each unit is equipped with a starter and overload protection.**



## 8 MAXIROLL TECHNICAL SPECIFICATIONS

Unit		
Weight without arm	lb / kg	240 / 110
Weight with arm	lb / kg	292 / 132
Motor	TEFC	Frame 56 / C face
Power supply	V / Hz	As requested or specified
Power	HP / kW	1 / 0.75
R.P.M.	3450	
Pressured air tank	3 gallon capacity	
Air pressure required	80 to 100 P.S.I	
Pressured air connection	1/4" N.P.T.	
Airflow with arm	dB(A)	69 @ 3' (1m)
Airflow without arm	CFM / L/s	850 / 400
Noise level	Tray # 1	0.5 gallon
Dust storage capacity	Tray # 2	2 gallons

Pulse cleaning operation	
Method	Push button standard (automatic optional)
Air pulse	Through venturi / reverse pulse
Valve	Diaphragm
Constant air connection	Not required
Tank fill time	4 to 6 seconds
Air pulse duration	200 ms
Air tank capacity	3 gallon
Required air pressure	80/90 P.S.I
Compressed air requirement	Dry and clean

Amperage draw		Amperage draw	
115-1-60	12 amps	460-3-60	1.6 amps
230-1-60	6.5 amps	575-3-60	1.4 amps
208-3-60	3.1 amps		

Filters		
Prefilter included (aluminium)		
Quantity	1	
Dimensions	in / mm	17 x 21 x 1 / 540 x 440 x 25
Filtering efficiency	25 % @ 10 microns	
Maintenance	Washable / replaceable	
Main cartridge included (polyester, 130 sq. ft.)		
Quantity	1	
Dimensions	in / mm	12.8 x 26 / 325 x 660
Filtering efficiency	99.9 % @ 1 micron	
Maintenance	Cleaned by air pulse / replaceable / washable	
Final charcoal filter included (polyester fabric)		
Quantity	1	
Dimensions	in / mm	17 x 21 x 1 / 540 x 440 x 25
Filtering efficiency	30 % molecular	
Maintenance	Disposable / replaceable	
HEPA after-filter with rack (optional)		
Quantity	1	
Dimensions	in / mm	16 x 20 x 6 / 400 x 500 x 150
Filtering efficiency	99.97 %	
Maintenance	Disposable / replaceable	
CGM granular activated charcoal final filter (optional)		
Quantity	1	
Dimensions	in / mm	17 x 21 x 1 / 540 x 440 x 25
Filtering efficiency	60-90 % molecular	
Maintenance	Disposable / replaceable	

## 9 MAXICART TECHNICAL SPECIFICATIONS

Unit		
Weight without arm	lb / kg	345 / 156
Weight with (1) arm — (2) arms	lb / kg	405 / 184 — 465 / 212
Motor	TEFC	Frame 56 / C face
Power supply	V / Hz	As requested or specified
Power	HP / kW	3 / 2.2
R.P.M.	3450	
Pressured air tank	3 gallon capacity	
Air pressure required	80 to 100 P.S.I.	
Pressured air connection	1/4" N.P.T.	
Airflow with (1) arm — (2) arms	CFM/L/s	1200 / 2035 — 375/ 640
Airflow without arms	CFM / L/s	1500 / 710
Noise level	dB(A)	76 @ 3' (1 m)
Dust storage capacity	Tray # 1	2 gallons

Pulse cleaning operation	
Method	Push button standard (automatic optional)
Air pulse	Through venturi / reverse pulse
Valve	Diaphragm
Constant air connection	Not required
Tank fill time	4 to 6 seconds
Air pulse duration	200 ms
Air tank capacity	3 gallon
Required air pressure	80/90 P.S.I.
Compressed air requirement	Dry and clean

Amperage draw		Amperage draw	
208/230/1/60	17 amps	460/3/60	4.8 amps
208/230/3/60	9.6 amps	575/3/60	3.9 amps

Filters		
Prefilter included (aluminium)		
Quantity	1	
Dimensions	in / mm	17 x 21 x 1 / 540 x 440 x 25
Filtering efficiency	25 % @ 10 microns	
Maintenance	Washable / replaceable	
Main cartridge included (polyester, 130 sq. ft.)		
Quantity	1	
Dimensions	in / mm	12.8 x 26 / 325 x 660
Filtering efficiency	99.9 % @ 1 micron	
Maintenance	Cleaned by air pulse / replaceable / washable	
Final charcoal filter included (polyester fabric)		
Quantity	1	
Dimensions	in / mm	17 x 21 x 1 / 540 x 440 x 25
Filtering efficiency	30 % molecular	
Maintenance	Disposable / replaceable	
HEPA after-filter with rack (optional)		
Quantity	1	
Dimensions	in / mm	16 x 20 x 6 / 400 x 500 x 150
Filtering efficiency	99.97 %	
Maintenance	Disposable / replaceable	
CGM granular activated charcoal final filter (optional)		
Quantity	1	
Dimensions	in / mm	17 x 21 x 1 / 540 x 440 x 25
Filtering efficiency	60-90 % molecular	
Maintenance	Disposable / replaceable	

## 10 INSTALLATION



### WARNING!

Only qualified personnel should install and/or use the unit.

## 10.1 Inspection of goods

The MAXIROLL and MAXICART units are shipped fully assembled with the exception of the MAXAIR fume arm if ordered with the unit. Proceed with a visual inspection upon receiving the material for any damages or missing components. Open the lateral access door to ensure all internal components are still in place. Fume arm installation (if ordered with unit).

## 10.2 Necessary tools

The following list of tools are recommended to install and adjust the MAXAIR fume arm.

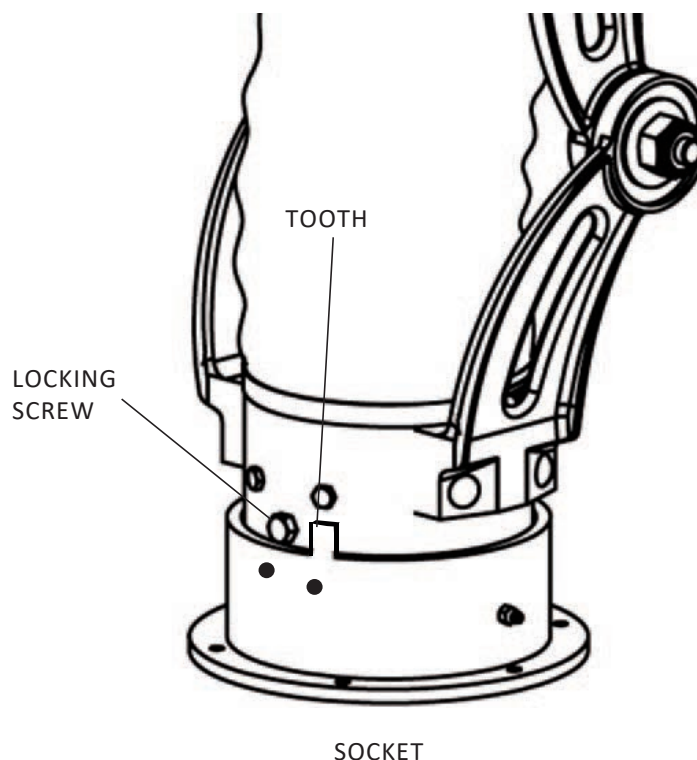
- Ratchet set
- Spanners and/or wrenches
- 3/16 hex key
- 7/8 socket

Warning: keep the plastic wrap on the fume arm until completely installed to avoid damages during installation.

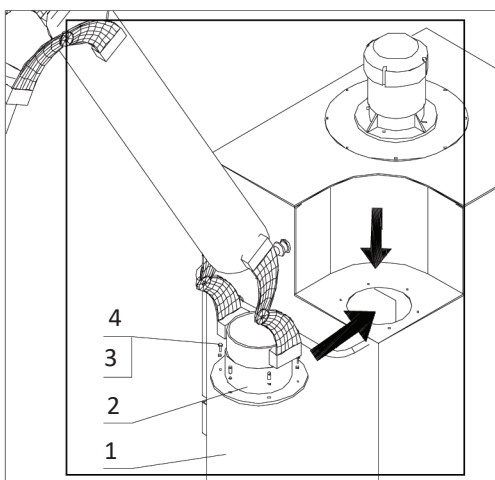
### 10.2.1 Arm installation steps

**Note on MAXAIR fume arm installation:** the MAXAIR fume arm does not make a full 360 degrees rotation. If you need to have the fume arm do a full rotation, remove the hex bolt from the top part of the arm socket. A maximum 4 or 5 full rotations (left or right) will then be possible before reversing the rotations. (See figure 2 : socket)

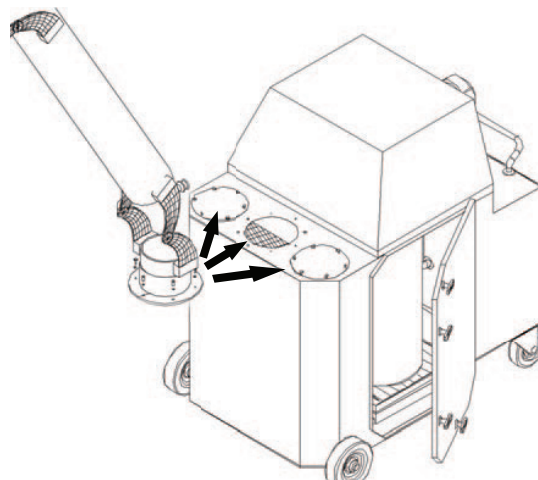
Figure 2



1. Apply the front caster swivel foot brakes on the unit.
2. Open the MAXAIR fume arm cardboard box and take out the fume arm. Proceed with a visual inspection to ensure all components are in place.
3. Lift the arm up and position over the round outlet. When doing so, make sure you do not "slide" the fume arm socket on the paint surface of the unit to avoid scratches and/or dents to the cabinet.
4. Align the MAXAIR fume arm socket holes with the ones around the opening. Ensure the locking screw faces outward (front of the unit) and tooth faces the rounded part of the cabinet. Once the holes are perfectly aligned, bolt arm socket to cabinet.

**Figure 1**


MAXIROLL ARM INSTALLATION

**Figure 1b**


MAXICART ARM INSTALLATION

**Note:** the MAXICART unit can be equipped with two (2) 6" MAXAIR fume arms or one (1) 8". Remove appropriate diameter cover plates to install fume arms for installation.

5. Ensure the fume arm pivots smoothly without grinding noise or wobbling movement.
6. The MAXAIR fume arm joints are pre-adjusted at the factory but will require final adjustment upon installation. Using an adjustable wrench to hold the head of the bolt, tighten or loosen (as needed) the 7/8" nut with a ratchet to the desired tension. **DO NOT OVERTIGHTEN THE JOINTS.** Once all joints are adjusted, the arm should move freely in all directions without sagging or being too stiff to maneuver into position. For more information on the usage of the MAXAIR fume arm, refer to owner's manual supplied with the arm.

## 11 ELECTRICAL CONNECTION ON MAXIROLL / MAXICART

**Note on MAXIROLL electrical:** standard unit is supplied with a 115V starter, 15' power cord with a 3 prong plug. If other voltage is ordered, plug will be supplied by customer.

**Note on MAXICART electrical:** unit is supplied as per required voltage and 15' power cord. Plug will be supply by customer.

1. Plug the unit into a proper electrical outlet.
2. If you need to use an electrical extension cord, ensure the cord meets the requirements for the motor amperage.
3. Ensure you do not move the unit further than the length of the cord. This could result in breaking or ripping the cord and cause an electrical shock.

## 12 PERFORMANCE

### 12.1 Check list

Before starting the unit for the first time, the check list listed below must be followed to ensure all components work properly.

1. Remove all objects around the fume arm hood.
2. Ensure access door is closed and locked.
3. Ensure power cord is connected into an appropriate electrical outlet.
4. Start the unit and shut it off immediately. Listen for unusual noises coming from the motor or impeller.
5. Start the unit again and let it run for a few minutes before using it as per it's required application.

### 12.2 Performance instructions (pulse cleaning system)

1. Plug the unit into a proper 120 VAC outlet. Turn the selector knob to the ON position. (See figure 3)
2. Positon the fume arm hood about 10" to 15" (250 à 380 mm) away from the welding gun or source of dust.

### 12.3 Compressed air cleaning

**Note :** a check valve should be tapped onto the 1/4" NPT connection before filling the compressed air tank. Air should be clean and dry.



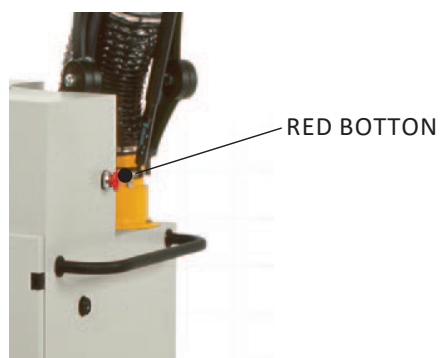
#### **WARNING!**

Do not operate the pulse cleaning system when filter access door is opened.

**To use the pulse cleaning system, follow the steps listed below in order to ensure the unit will perform adequately.**

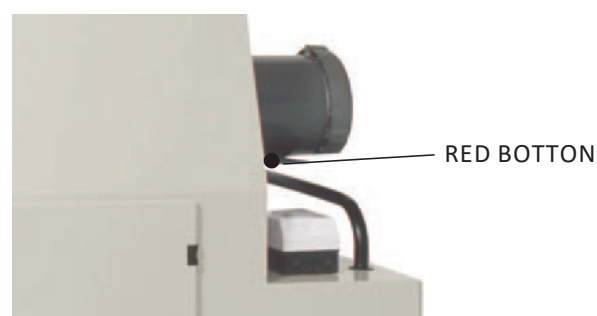
1. Connect the compressed air line to the unit with a 1/4" NPT connection. Tank should take about 4 to 6 seconds to fill.
2. For a longer use of the cartridge, it is best to feed 60 PSI into the air tank. Max PSI is 90.
3. Press the the red palm button to release the compressed air from the tank and to clean the cartridge. (Figure 3a et 3b)

**Figure 3a**



MAXIROLL

**Figure 3b**



MAXICART

## 13 REPLACEMENT/CLEANING OF MAXIROLL / MAXICART FILTERS



### **WARNING!**

Wear appropriate safety gear such as safety goggles or gloves when replacing the cartridge. The filter cartridge may be heavier than expected. **Do not shake or drop the cartridge.** Use necessary precaution when replacing the filters to avoid injuries.

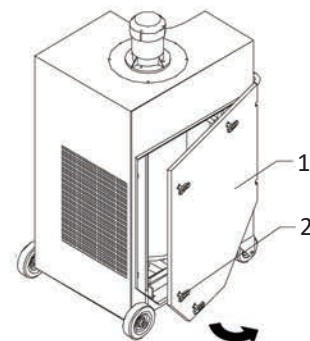
Frequency of pulse cleaning will depend on how often the unit is used or the type of dust to be filtered. Decrease in suction is a sign to pulse clean the cartridge.

### 13.1 Replacement/cleaning of MAXIROLL aluminum spark trap filter

Follow these next steps to clean or replace the aluminum spark trap filter.

**Note:** the spark trap filter is an important component of the MAXIROLL unit. Avoid having this component may result in a fire in the filter cartridge.

1. Open the cabinet lateral side access door using the handles (2).
2. Slide the filter (3) out of the cabinet.
3. Wash or brush away dirt in the filter. Ensure you do not damage the mesh fabric.
4. Proceed with a visual inspection for tears or rips. Replace if necessary. Put filter back in place.

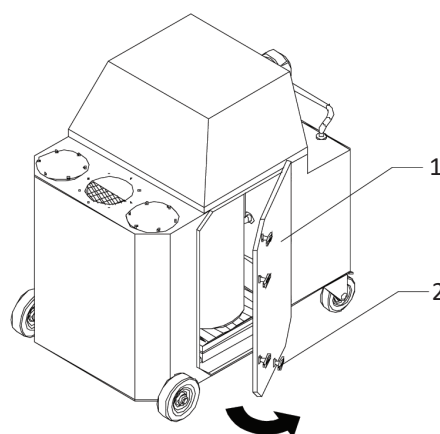
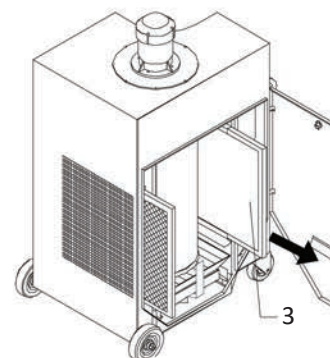


### 13.2 Replacement/cleaning of MAXICART aluminum spark trap filter

Follow these next steps to clean or replace the aluminum spark trap filter.

**Note:** the spark trap filter is an important component of the MAXICART unit. Avoid having this component may result in a fire in the filter cartridge.

1. Open access door (1) on the side of the cabinet using the handles (2).
2. Slide filter out of cabinet (5).
3. Brush clean or wash aluminum filter. Ensure you do not damage the screen
4. Proceed with a visual inspection of the filter. Replace if necessary. Insert filter b back in unit.



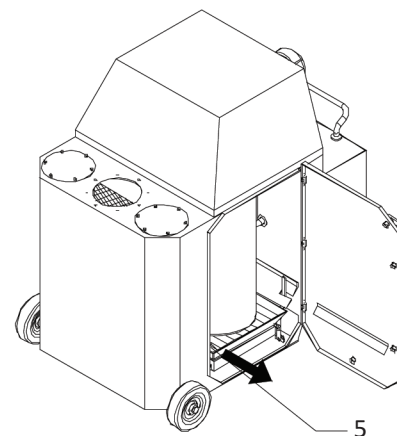
## 13.4 Replacement of MAXIROLL / MAXICART filter cartridge

The life expectancy of the cartridge is only limited by the type of dust to be filtered and number of hours used. However, it is recommended to replace the cartridge after 1200-1500 hours of usage.

If a cartridge tears or rips open, the cartridge should be replaced as soon as possible.

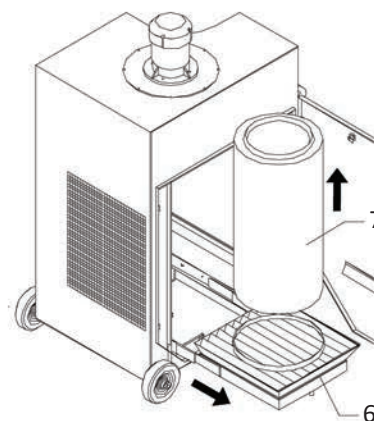
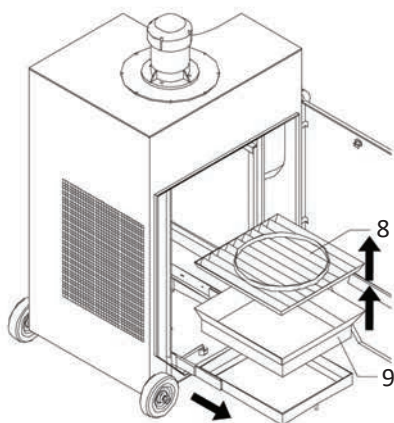
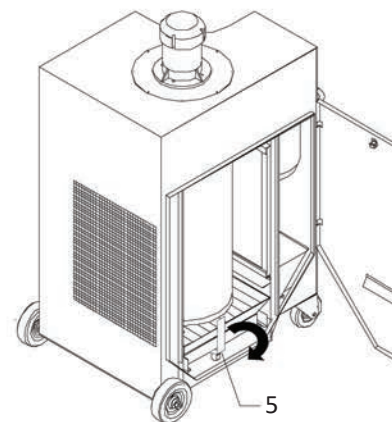
Before replacing the cartridge, shut the unit OFF and remove the plug from the electrical outlet.

Follow these next steps to replace the cartridge.



### 13.4.1 MAXIROLL

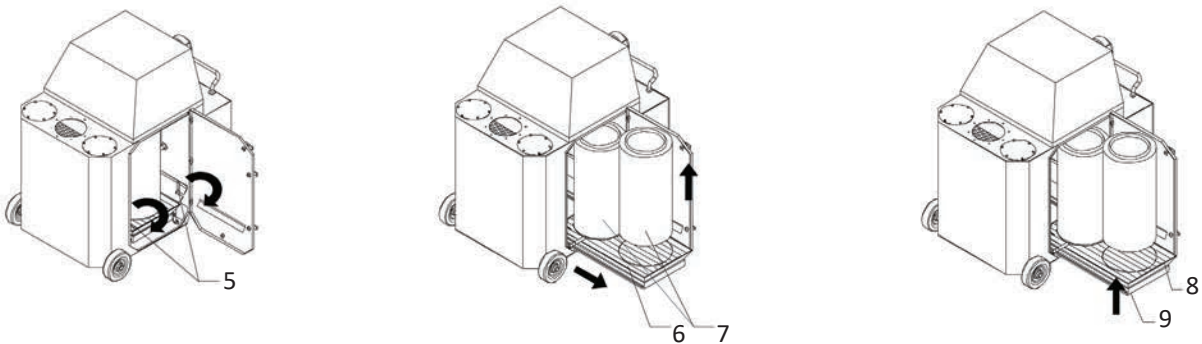
1. Push the dust drawer lever down (5).
2. Slide the dust drawer out of the unit (6). Lift cartridge off the drawer (7).
3. Dispose of cartridge in a safe manner and according to environmental regulations.
4. Empty the dust drawer (9) by pulling out the grill (8).
5. Push the dust drawer and the grill back into the unit before installing a new cartridge.
6. Install a new cartridge and push the dust drawer level up.



### 13.4.2 MAXICART

1. Push the two (2) dust drawer levers down.
2. Slide the dust drawer out of the unit (6). Lift cartridges off the drawer (7).
3. Dispose of cartridges in a safe manner and according to environmental regulations.
4. Install a new cartridges. Ensure new cartridges are "sitting" firmly on the drawer cartridges holder.
5. Push the dust drawer back into the unit and push dust drawer levers up.
6. Ensure cartridges gaskets are firmly set against the upper part of filter housing.

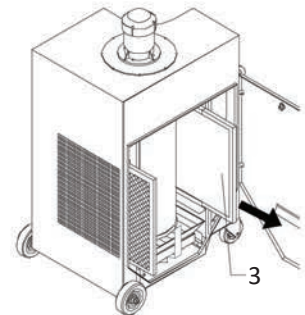
**Note:** for better and safe performance, use same cartridge material and properties.



### 13.5 Replacement of charcoal filter/MAXIROLL

Follow these next steps to replace the charcoal filter.

1. Open cabinet access door.
2. Remove the charcoal filter (on left side of unit). Dispose of filter following existing environmental rules and regulations.
3. Slide new charcoal filter on its tracks and close access door.

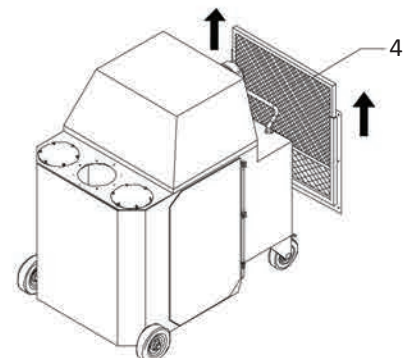


### 13.6 Replacement of charcoal filter/MAXICART

Follow these next steps to replace the charcoal filter.

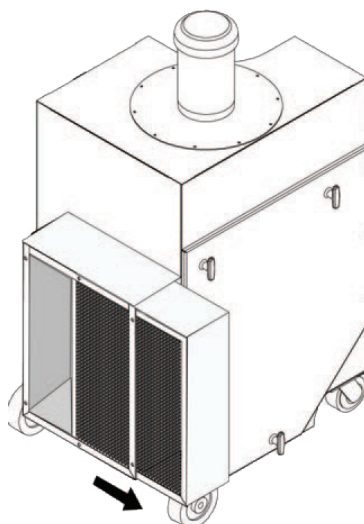
It is not necessary to open the cabinet access door to replace the charcoal filter. The filter is located behind the clean air outlet at the rear of the unit.

1. Remove the screws holding the air louver into place.
2. Slide used charcoal filter out of it's track and dispose of filter following existing environmental rules and regulations
3. Slide new charcoal filter on it's tracks and screw louver back into place.



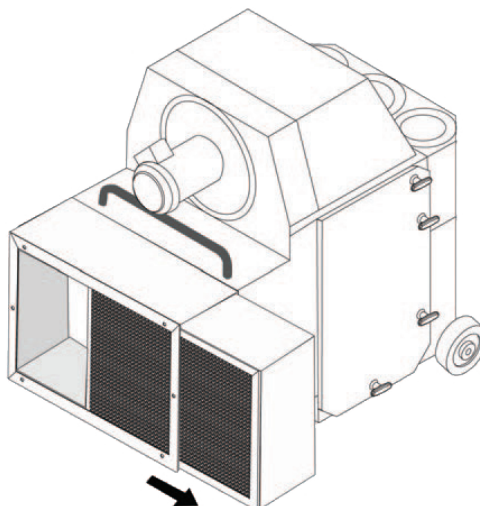
### 13.7 Replacement of HEPA filter/MAXIROLL (optional)

1. Open HEPA filter access door at unit air outlet. Slide filter out and dispose of cartridges in a safe manner and according to environmental regulations.
2. Slide in new HEPA filter. Ensure filter is installed correctly by checking direction of arrow for airflow.
3. Ensure filter frame fits tightly against the filter housing.



### 13.8 Replacement of HEPA filter/MAXICART (optional)

1. Open HEPA filter access door at unit air outlet. Slide filter out and dispose of cartridges in a safe manner and according to environmental regulations.
2. Slide in new HEPA filter. Ensure filter is installed correctly by checking direction of arrow for airflow.
3. Ensure filter frame fits tightly against the filter housing.



## 14 MAINTENANCE AND INSPECTION

The chart indicated below shows different inspections and the frequency at which they should be performed.

Frequency of inspections	Components	Procedures
Daily	Cabinet	Empty dust tray.
		Check pressure gauge. If gauge indicates 6" or more, cartridge should be replaced.
		Ensure motor/fan assembly runs smoothly.
		Move the MAXAIR fume arm in different positions for stability (if supplied with the unit).
Weekly	Filter elements	Check for proper installation of cartridge and air leaks.
		Check for accumulation of dust or debris above and inside the filter elements. Clean if necessary.
Yearly	Cabinet	Proceed with a complete inspection of the unit.
		Check each filter element status. Replace or clean if necessary.

## 15 TROUBLESHOOTING MAXIROLL/MAXICART

Problem	Probable cause	Solution
Smoke or dust at clean air outlet	Cartridge(s) not properly installed.	Check installation of cartridge and repair if necessary. Seal all gaskets. (Refer to cartridge replacement section, page 17-18.)
	Cartridge is not adjusted properly	Ensure drawer levers are completely UP.
	Cartridge is damaged	Replace any damaged filter element. (Refer to cartridge or aluminum spark trap filter replacement section, page 15 et 16.
	Damage on seals or gaskets	Check seals around the lateral side access door and on filters.
Insufficient vacuum of contaminants	The access door is not shut tight	Make sure access door is properly closed.
	Obstructions on impeller	Check for debris on impeller and remove if present.
	Main cartridge is clogged	Remove and replace main cartridge with same media type. (Refer to cartridge replacement procedure in pages 17-18 )
	Aluminum pre-filter or charcoal filter is clogged.	Clean and/or replace
	Obstruction in MAXAIR fume arm.	Check for debris in MAXAIR fume arm.
	Fume arm damper is closed.	Open damper on fume arm.
Fan does not work	Unit is not plugged.	Plug unit into appropriate electrical outlet.
	Wiring to the starter is not connected.	Check all wiring connections and contacts.
	Overload has tripped.	Reset overload.

## 16 WARRANTY

- 16.1 **Coverage:** Aireau Quality Control Inc. or its designated affiliate (the "Seller") selling the product (the "Product"), warrants that the Product sold by Seller will be free from defects in material and workmanship for a period of 12 months from the date of its installation or 14 months from the date of shipment by Seller, whichever date is earlier (the "Warranty Period").
- 16.2 **Exceptions:** This warranty does not apply to any Product or portion thereof that: (i) has been used in a manner not in compliance with Seller's or manufacturer's documentation and instructions, (ii) has had changes, alterations or repairs made by a person other than a person authorized by Seller, (iii) has been improperly installed or used or has been installed or used contrary to applicable codes, standards, laws and regulations, (iv) has been subjected to improper storage, accident, neglect, misuse or abuse, (v) has been damaged during shipping, (vi) has been subject to damages resulting from normal wear and tear, (vii) has not been used with appropriate fire protection systems or explosion venting when required or (viii) has not been installed by a licensed contractor with experience in fire and explosion hazards and applicable codes, laws and regulations. For greater certainty, this warranty does not apply to filters sold as part of, or for use with, the Product. Unless specifically accepted otherwise in writing by Seller, Seller does not warrant that electrical equipment will comply with any laws or regulations of the customer's jurisdiction.
- 16.3 **Claims:** To benefit from this warranty, customer must notify Seller in writing of the Product defect, which notice shall include a reasonable description of the defect, within 10 days from the date such defect is discovered or ought to have been discovered.
- 16.4 **Remedy:** During the Warranty Period and subject to the terms herein, Seller will, at its option, either: (i) repair or replace the Product or any defective parts or components (except for filters) with Product, parts or components (except filters) free from defect or (ii) credit or refund the purchase price of the Product. If Seller so requests, customer must return the defective Product to Seller's place of business determined by Seller. Shipping, installation, removal and re-installation costs will be solely borne by the customer. **The foregoing shall be customer's sole and exclusive remedy for any defect in the product, its parts and components and for any breach of the warranty herein.**
- 16.5 **Disclaimer:** Except as set forth in this section 1, each of seller, its affiliates and their directors, officers, subcontractors and representatives (the "seller parties") disclaims all representations and warranties, whether written, oral, express, implied, statutory, or otherwise, including all implied warranties of merchantability, quality, fitness for a particular purpose, non-infringement, and warranties arising from a course of dealing, course of performance, usage, or trade practice and customer hereby expressly waives any right related thereto. Without limitation to the foregoing and except as expressly set out herein, the seller parties do not represent or warrant that: (a) the use of the product will be timely, uninterrupted or operate in combination with any other hardware, software, system or data or (b) the product will meet customer's intended use, requirements or expectations.

## 17 LIMITATION OF LIABILITY

- 17.1 **Limitation of Liability:** Notwithstanding anything to the contrary, in no event will the seller parties' liability arising out of, or related to, the product or its parts and components, whether pursuant to contractual or extracontractual liability, tort or under any other theory of liability, exceed the price paid to seller for the product giving rise to such liability.
- 17.2 **Exclusion of Consequential and Similar Damages:** Notwithstanding anything to the contrary, in no event will the seller parties be liable for any indirect, punitive, special, exemplary, incidental, consequential or other similar damages of any type or kind (including loss of revenue, profits, use or other economic advantage, damages due to product failure, work stoppage or delays in delivery) arising out of, or in any way connected to, the product or its use, breach of contract, tort (including negligence), strict liability, product liability, or otherwise, regardless of cause, even if the seller parties had previously been advised of the possibility of such damages or could have reasonably foreseen them.
- 17.3 **Fire and Explosion and Acceptance of Risk:** Customer acknowledges that improper installation or use of the Product may result in fire or explosion. To minimize such risks, proper installation, operation, and maintenance of the Product in accordance with all applicable codes, standards, laws and regulations is critical. Prior to installation and use, customer shall ensure that the Product meets the applicable codes, laws and regulations, including those related to the addition of appropriate fire protection systems or explosion venting. Installation shall be performed by a licensed contractor with experience in fire and explosion and applicable codes, laws and regulations.

## 18 APPLICABILITY

- 18.1 The terms herein constitute the only warranty given by Seller with respect to the Product. No other terms and conditions, whether included on a purchase order or in any other document, shall apply or bind the Seller with respect to the Product warranty and all such terms and conditions and documents are expressly disclaimed.

## 19 GOVERNING LAW

- 19.1 These warranty terms will be governed by and construed under the laws in force in the Province of Ontario, Canada, excluding its conflict of law rules.