

MAXIDRIVE™

AQC SOURCE CAPTURE EQUIPMENT

EXHAUST FAN



- Direct drive 3450 R.P.M.
- Backward inclined spark proof aluminum impeller
- Inlet guard protective mesh (optional)
- Inlet cone for maximum vacuum
- Interior or exterior installation
- Rugged painted steel construction



*Superior technology generating
substantial operating savings*



DUST
COLLECTING
SYSTEMS

Direct drive exhaust fan

Overhead canopies are a thing of the past. Workers were actually breathing the dust and smoke-filled air as it was travelling upward toward the canopy. Source capture is the safe and the right way to eliminate the harmful pollutants significantly that are the primary cause of lung diseases. Maxair fume arms are built to reduce the presence of industrial indoor air particles. From laboratories to large welding shops, Maxair fume arms will get the job done.



A Leading-Edge, High-Performance Company

The AQC Dust Collecting Systems division manufactures a full range of safe, industrial dust collectors, as well as dust and smoke capture equipment at the leading edge of air pollution control technologies based on more than 30 years' experience in the field.

AQC's strength lies in its innovative products designed and developed to generate substantial savings throughout their entire operating life.

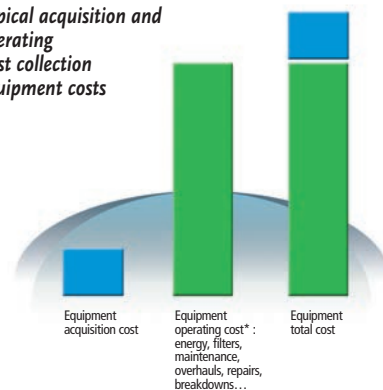
AQC is renowned for its technological innovation, safe and sophisticated equipment design, as well as its robust and precise product manufacturing. For example, the unique design of the baffles inside AQC dust collectors makes filter cleaning easy. The AQC cartridge holder design provides maximum filter surface and enhanced filter performance. The ultra-smooth concept inside AQC fume arms makes them maintenance-free.

In short, AQC equipment is designed and built to generate substantial operating savings in terms of time, money and energy. This translates to major reductions in operating costs – from 10 to 20% – throughout the equipment's service life. This scale of savings can represent a significant portion of the equipment's total purchase price. Companies looking to maximize their profitability should factor in these savings when purchasing equipment.

The unique design and manufacturing of AQC equipment generates significant savings for various reasons :

- Substantial increase in the duration of filters.
- Lower energy consumption during years of use.
- Significantly less maintenance (easy to clean, robust manufacturing, a minimum number of more reliable and durable parts).
- Reduced operating costs (less frequent overhauls, lack of or minimum down time, etc.).
- Lower administrative costs (coordination, follow-ups, supervision) due to much less frequent breakdowns.
- Safe design can prevent serious or even fatal accidents.
- Increased comfort and productivity of personnel.

Typical acquisition and operating dust collection equipment costs

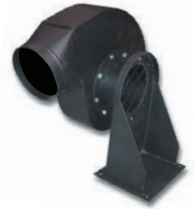


The acquisition cost is just one part of the equation. It's the total cost including the operating cost ***throughout the life cycle of the equipment** that must be kept low. This is what AQC delivers. The advanced technology, design, robustness, durability and safety of AQC products generate major savings during the equipment's entire life cycle.

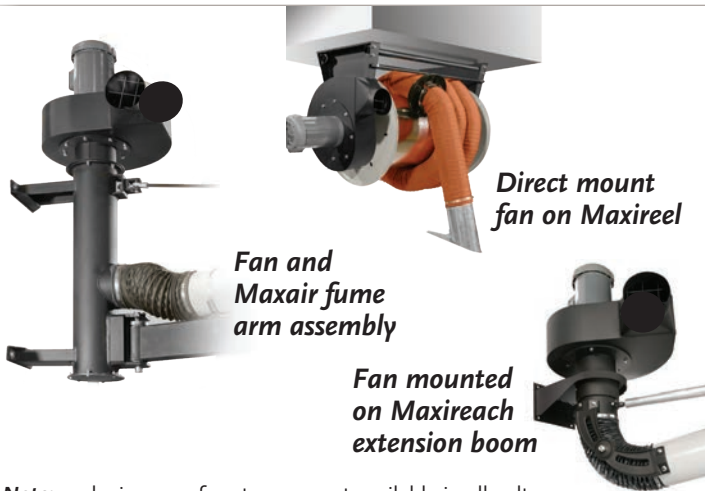
MAXIDRIVE THE RIGHT FAN FOR SOURCE EXTRACTION

Powerful, rugged and maintenance free! Most of our competitors do not include these standard features :

- Multi purpose for source capture
- 3450 R.P.M. direct drive design with T.E.F.C motors
- Aluminum backward inclined impeller with steel housing for spark-proof design
- Adjustable orientation air discharge
- Powder coat painted housing
- Inlet cone for maximum suction
- Inlet wide mesh protective screen



TYPICAL APPLICATIONS FOR MAXIDRIVE EXTRACTOR FAN



Note: explosion proof motors are not available in all voltages. Contact A.Q.C. or representative for availability.

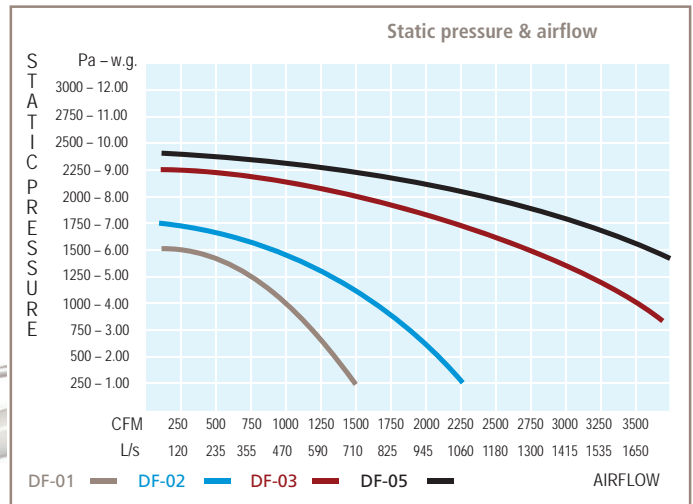
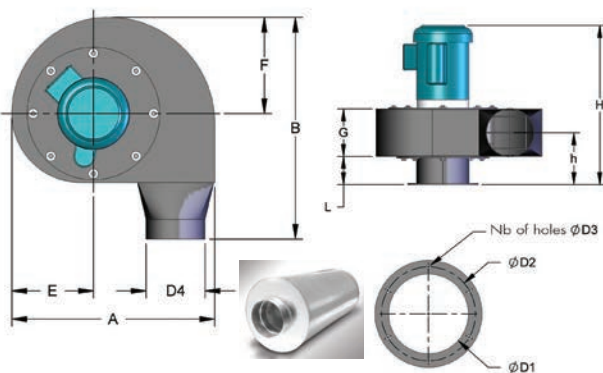


CHART 1

MAXIDRIVE FANS (3450 R.P.M.)



Amperage draw					
Model	Voltage	Amperage	Model	Voltage	Amperage
DF-01	115-1-60	12	DF-03	115-1-60	N/A
	230-1-60	6.5		230-1-60	17
	208-3-60	3.1		208-3-60	9.6
	460-3-60	1.6		460-3-60	4.8
	575-3-60	1.4		575-3-60	3.9
DF-02	115-1-60	24	DF-05	115-1-60	N/A
	230-1-60	12		230-1-60	28
	208-3-60	6.8		208-3-60	15.2
	460-3-60	3.4		460-3-60	7.6
	575-3-60	2.7		575-3-60	6.1

Optional outlet silencer reduces dB level by 10 to 25 % depending on model. MAXIDRIVE direct drive fans are designed for high outlet velocity. Use of silencer may be required in some applications. Contact factory or representative for details and specifications.

CHART 2

Fan dimensions

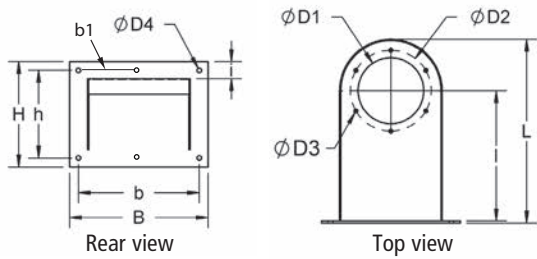
Model	Power [HP] / [Kw]	Dimensions [inches] / [mm]													Weight [lbs] / [kg]
		A	B	E	F	H	L	G	h	d1	d2	d3	d4	Nb	
DF-01	1 / 0.75	20.2 / 513	22.6 / 574	8.3 / 211	9.8 / 249	21.1 / 536	3.9 / 99	5.9 / 150	6.9 / 175	6.25 / 160	7.69 / 195	0.4 / 9	6 / 198	6	70 / 31.8
DF-02	2 / 1.50	22.7 / 577	24.8 / 630	9.2 / 234	11 / 279	24.8 / 630	4.9 / 124	6.3 / 160	7.4 / 188	8 / 200	9.69 / 246	0.4 / 9	8 / 249	8	82 / 37.3
DF-03	3 / 2.25	25.6 / 650	27.3 / 693	10.4 / 264	12.5 / 318	25.4 / 645	4.9 / 124	6.9 / 175	8.4 / 213	N/A	N/A	N/A	10 / 302	8	96 / 43.6
DF-05	5 / 3.55	25.6 / 650	27.3 / 693	10.4 / 264	12.5 / 318	27.3 / 693	4.9 / 124	7.8 / 198	8.8 / 224	N/A	N/A	N/A	12 / 302	8	166 / 75.5

Note 1: MAXIDRIVE fans are available in clockwise configuration only.

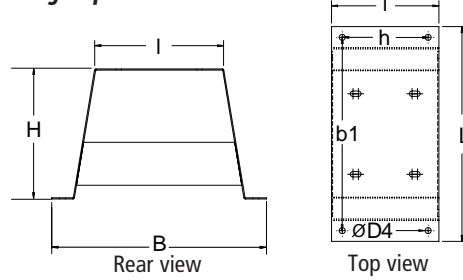
Note 2: aluminum impeller is standard, optional steel impeller with high temperature and chemical resistant paint is available.

MAXIDRIVE FAN SUPPORT BRACKET DIMENSIONS

Wall mount bracket



Roof top mount bracket



Bracket dimensions

CHART 3

Model	[HP] / [Kw]	Dimensions [inches] / [mm]													Weight [lbs] / [kg]
		D1	D2	Nb	D3	D4	L	I	H	h	B	b	b1	i	
WBF-006	1 / 0.75	6.25 / 160	7.69 / 195	6	0.28 / 7	0.43 / 11	17.44 / 443	12.38 / 314	10 / 254	8.31 / 211	13.19 / 335	11.5 / 292	5.75 / 144	N/A	11 / 5
WBF-008	2 / 1.50	8 / 200	9.69 / 246	8	0.35 / 9	0.43 / 11	22.44 / 570	15.25 / 387	11.88 / 297	9.75 / 248	15.5 / 394	13.63 / 346	6.75 / 170	N/A	13 / 5.9
DF-03-SUPP	1/2/3	N/A	N/A	4	N/A	0.56 / 14	16 / 400	7.77 / 194	10.10 / 252	6.50 / 162	8.00 / 200	N/A	14.00 / 350	8.00 / 200	12 / 5.4
DF-05-SUPP	5/3.55	N/A	N/A	4	N/A	0.56 / 14	20 / 500	11.77 / 294	12.10 / 302	8.00 / 200	10,00 / 250	N/A	18.00 / 450	10,00 / 250	16 / 7.2

CREATE YOUR MAXIDRIVE EXHAUST FAN SPECIFICATION

1. Fan should have the following components :

11 and 14 gauge powder coat painted steel housing and backward inclined aluminum impeller, wide mesh protective screen at inlet, adjustable fan orientation discharge, direct drive 3450 R.P.M., TEFC motor.

2. Fan model to be :

- a) DF-01 (1 H.P.)
- b) DF-02 (2 H.P.)
- c) DF-03 (3 H.P.)
- d) DF-05 (5 H.P.)

3. Voltage to be :

- 115 / 1 / 60 208 / 3 / 60 230 / 1 / 60
- 460 / 3 / 60 575 / 3 / 60

4. Fan model to be :

- a) powder coat painted steel impeller for temperatures up to 250 °F / 120 °C
- b) fan to be included with wall / column support bracket
- c) fan to be included with roof support bracket
- d) motor cover for exterior installation
- e) outlet silencer
- f) fan starter with overload protection
- g) bolted flanged inlet for direct mount to MAXAIR fume arm, MAXIREEL hose reel or MAXIREACH extension swing boom (1 and 2 HP only)
- h) slip fit inlet for ducting or flexible hose connection

Note: specifications listed above may be modified to suit application. Contact AQC or representative for information.

Your A.Q.C. representative is :

To obtain a free copy of our full-colour corporate brochure, please call : 1-866-629-4356



660, de la Sabliere, Bois-des-Filion (Quebec) Canada J6Z 4T7
 Tel. : 1-866-629-4356 • Fax : (450) 621-6677
 Web site : www.aqcdust.com • e-mail : info@aqcdust.com