

MAXIRAIL™

AQC SOURCE CAPTURE EQUIPMENT

EXHAUST DUCTING WITH TROLLEY SYSTEM

- Duct and sliding trolley combination
- Multiple 6 foot segment connections
- Choice of 6", 9" trolley diameters
- MAXAIR fume arm, MAXIREEL hose reel or MAXIDROP hose drop attachments
- Lightweight aluminium construction



*Superior technology generating
substantial operating savings*



DUST
COLLECTING
SYSTEMS

Exhaust ducting with trolley system

Sliding suction rail is designed to draw and remove smoke, gas and dust pollutants from working area. It can be fitted with one or more Maxair self-supporting fume arms, MAXIREEL hose reels or MAXIDROP hose drops for vehicle fume extraction. Multiple rail segments can be installed end to end with no limit as to the possible total length. The basic element of the duct is a 10'/3m segment. The sliding trolley travels easily on casters outside of the rail ensuring that the interior of the rail is smooth and with minimum static pressure. Rubber lips open and close as the trolley moves along the rail minimizing air loss. It's aluminium construction allows minimum hanging weight. The MAXIRAIL can be mounted on ceiling or wall supports. Mounting configurations may vary according to specific needs.



A Leading-Edge, High-Performance Company

The AQC Dust Collecting Systems division manufactures a full range of safe, industrial dust collectors, as well as dust and smoke capture equipment at the leading edge of air pollution control technologies based on more than 30 years' experience in the field.

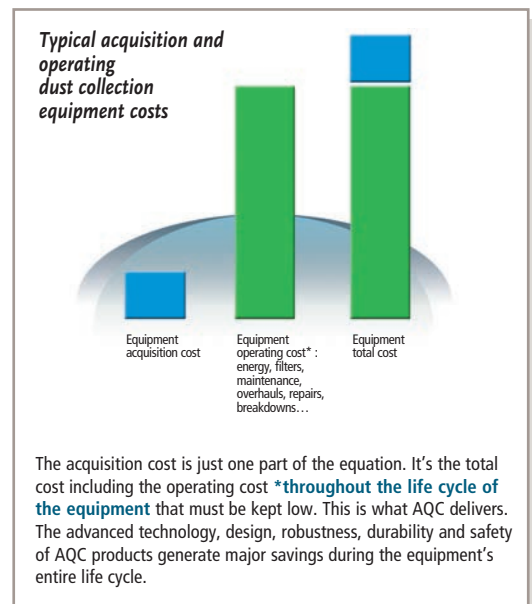
AQC's strength lies in its innovative products designed and developed to generate substantial savings throughout their entire operating life.

AQC is renowned for its technological innovation, safe and sophisticated equipment design, as well as its robust and precise product manufacturing. For example, the unique design of the baffles inside AQC dust collectors makes filter cleaning easy. The AQC cartridge holder design provides maximum filter surface and enhanced filter performance. The ultra-smooth concept inside AQC fume arms makes them maintenance-free.

In short, AQC equipment is designed and built to generate substantial operating savings in terms of time, money and energy. This translates to major reductions in operating costs – from 10 to 20% – throughout the equipment's service life. This scale of savings can represent a significant portion of the equipment's total purchase price. Companies looking to maximize their profitability should factor in these savings when purchasing equipment.

The unique design and manufacturing of AQC equipment generates significant savings for various reasons :

- Substantial increase in the duration of filters.
- Lower energy consumption during years of use.
- Significantly less maintenance (easy to clean, robust manufacturing, a minimum number of more reliable and durable parts).
- Reduced operating costs (less frequent overhauls, lack of or minimum down time, etc.).
- Lower administrative costs (coordination, follow-ups, supervision) due to much less frequent breakdowns.
- Safe design can prevent serious or even fatal accidents.
- Increased comfort and productivity of personnel.



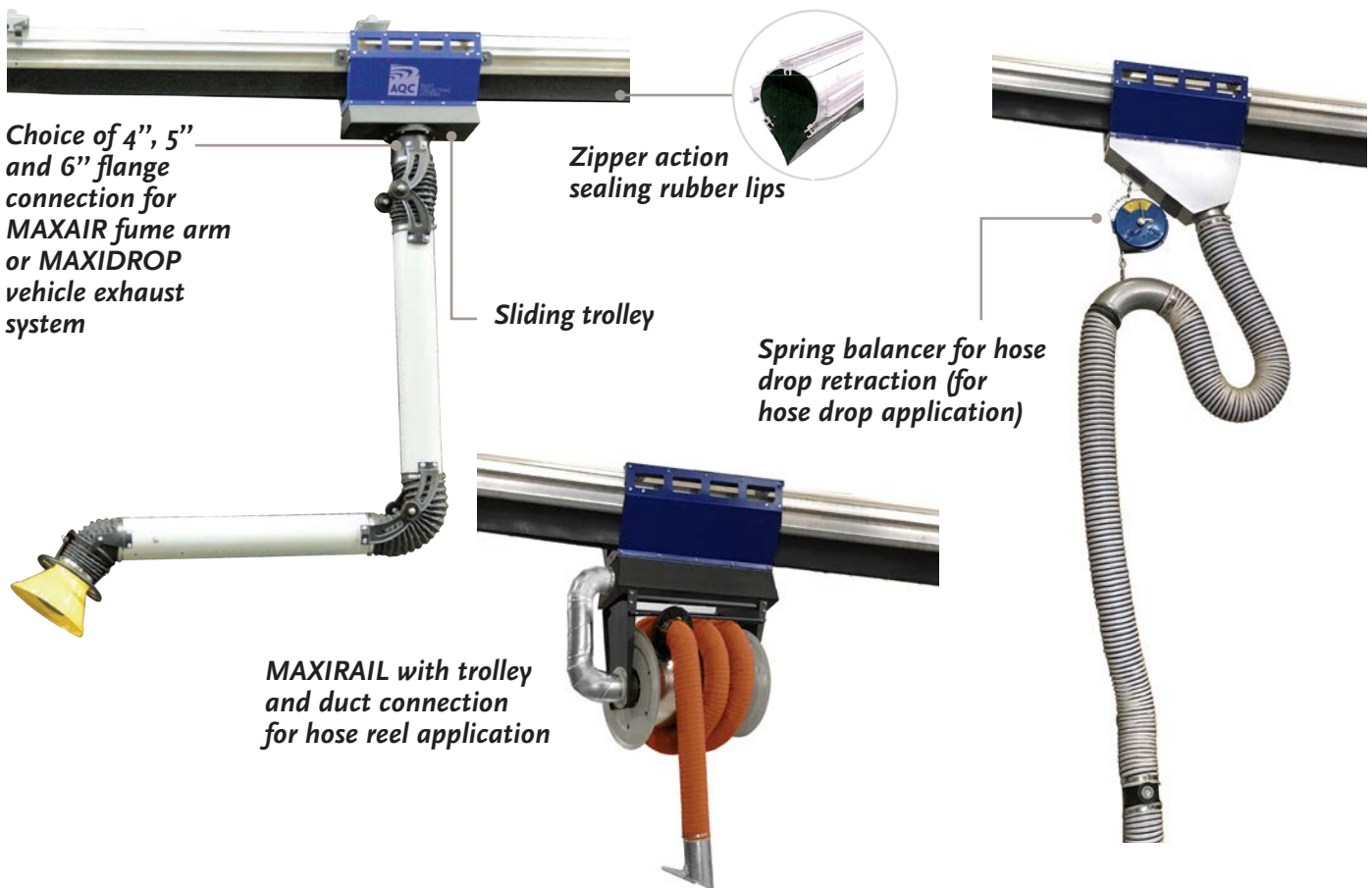
MAXIRAIL EASE OF MOVEMENT FOR MULTIPLE USAGE

Most of our competitors do not include these standard features :

- Duct and sliding trolley combination
- Multiple segment connections possible
- Choice of 6", and 9" trolley diameters
- Trolley on ball bearing casters
- Lightweight aluminium construction
- Easy installation

TYPICAL APPLICATIONS FOR MAXIRAIL DUCT SYSTEM

- Welding and fume capture
- Vehicle maintenance shops
- Linear or assembly lines
- Low ceiling facilities



Recommended air flow for hose drop and hose reels

CHART 1

| Hose diameter [inches] / [mm] | CFM | L/s |
|-------------------------------|-----------|-----------|
| 4 / 100 | 300 / 400 | 140 / 190 |
| 5 / 125 | 500 / 600 | 235 / 280 |
| 6 / 160 | 600 / 700 | 280 / 330 |

Recommended air flow for fume arm

CHART 2

| Arm diameter [inches] / [mm] | CFM | L/s |
|------------------------------|-----------|-----------|
| 4 / 100 | 330 / 560 | 70 / 165 |
| 5 / 125 | 350 / 550 | 165 / 260 |
| 6 / 160 | 600 / 800 | 280 / 380 |

Note : installation must be made according to local building codes and regulations.

Note : to obtain maximum vacuum and rubber lips tightness, it is recommended to order one (1) slide gate with fitting for each 30' of rail. This slide gate will be positioned on top of the rail by installer for proper air balancing.

MAXIRAIL AND TROLLEY DIMENSIONS

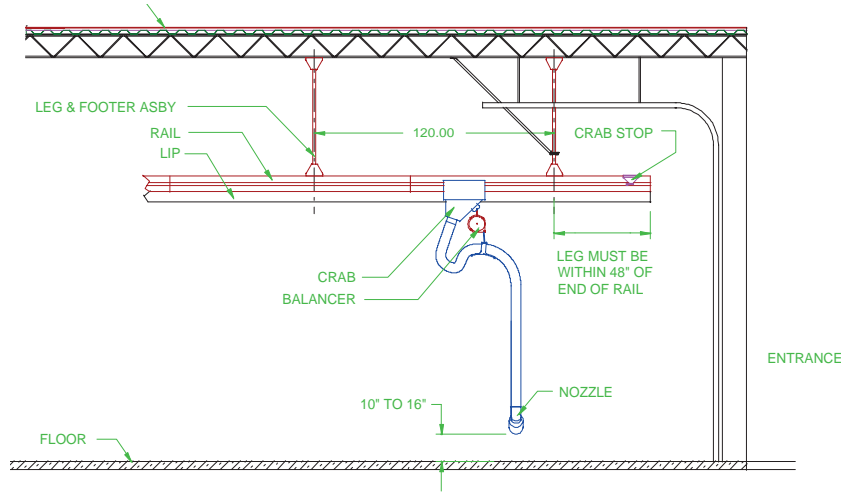


CHART 3

| MODEL | LENGTH (inches / mm) | Duct weight (per segment) (lb / kg) | Trolley weight (lb / kg) | Maximun capacity P (including trolley) | Maximun air volume (CFM / L/s) |
|----------|-------------------------|---|--------------------------------|--|--------------------------------------|
| MRA-10-6 | 120 / 3000 | 60 / 27 | 55 / 25 | 175 / 80 | 800 / 285 |
| MRA-10-9 | 120 / 3000 | 60 / 27 | 55 / 25 | 175 / 80 | 1300 / 315 |

CREATE YOUR MAXIRAIL SPECIFICATION

1. Rail should be :

Made of aluminium with reinforcement interior parallel rods, end cap(s), joiners, (2) rail hangers per 10' segment, rubber lips for minimal air leak, U channels for trolley travel.

2. Rail should include :

- a) _____ segment(s) of 10' [3 m]
- b) for a total of _____ ft. _____ m.

3. Rail should include trolley :

- a) 4" [100 mm]
- b) 5" [125 mm]
- c) 6" [150 mm]

4. Trolley should include :

- a) MAXAIR fume arm (refer to leaflet for proper selection)
- b) MAXIDROP system (refer to leaflet for proper selection)
- c) MAXIREEL hose reels (refer to leaflet for proper selection)

5. Rail should include :

- a) 6" [150 mm] left end exhaust connection
- b) 6" [150 mm] right end exhaust connection
- c) 6" [150 mm] rail top exhaust connection
- d) 6" [150 mm] slide gate with T fitting for air balancing at every 30' (10 m)
- e) two (2) wall support brackets per 10' segment in lieu of ceiling brackets

Note : specifications listed above may be modified to suit application. Contact A.Q.C. or representative for information.

Your A.Q.C.
representative is :

To obtain a free copy of our full-colour corporate brochure, please call : 1-866-629-4356



660, de la Sabliere, Bois-des-Filion (Quebec) Canada J6Z 4T7
Tel : 1-866-629-4356 • Fax : (450) 621-6677
Web site : www.aqcdust.com • e-mail : info@aqcdust.com