

AQC source capture equipment

MAXIDRIVE™

Extractor fan

April 27, 2007 version.
Leaflet under construction.
More information to come
at a later date.



- *Direct drive*
- *Backward inclined*
- *Spark proof*



Superior technology generating substantial operating savings

MAXIDRIVE™

High-Productivity Innovative Products

MAXIDRIVE *Direct drive extractor fan*

Manufactured with backward inclined aluminum blades, Maxidrive fans are designed to extract smoke, vapor and light dust away from the worker's breathing zone. The rugged steel housing with aluminum impeller assures a non-sparking design. Maxidrive can be mounted directly with Maxair fume arms, Maxireach extension booms or Maxireel hose reels.



A Leading-Edge, High-Performance Company

The AQC Dust Collecting Systems division manufactures a full range of safe, industrial dust collectors, as well as dust and smoke capture equipment at the leading edge of air pollution control technologies based on more than 30 years' experience in the field.

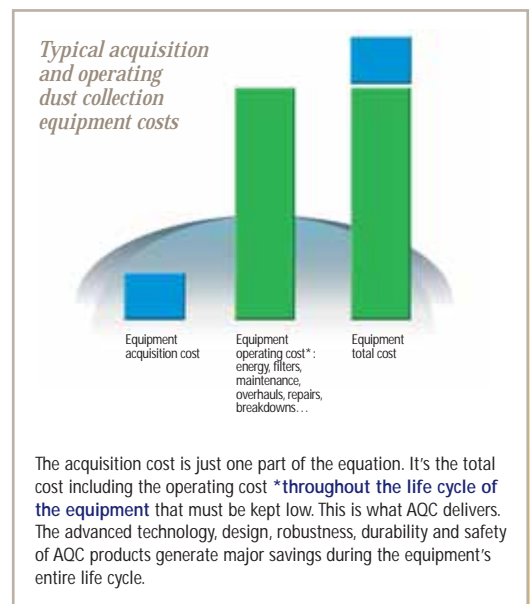
AQC's strength lies in its innovative products designed and developed to generate substantial savings throughout their entire operating life.

AQC is renowned for its technological innovation, safe and sophisticated equipment design, as well as its robust and precise product manufacturing. For example, the unique design of the baffles inside AQC dust collectors makes filter cleaning easy. The AQC cartridge holder design provides maximum filter surface and enhanced filter performance. The ultra-smooth concept inside AQC fume arms makes them maintenance-free.

In short, AQC equipment is designed and built to generate substantial operating savings in terms of time, money and energy. This translates to major reductions in operating costs – from 10 to 20% – throughout the equipment's service life. This scale of savings can represent a significant portion of the equipment's total purchase price. Companies looking to maximize their profitability should factor in these savings when purchasing equipment.

The unique design and manufacturing of AQC equipment generates significant savings for various reasons:

- Substantial increase in the duration of filters.
- Lower energy consumption during years of use.
- Significantly less maintenance (easy to clean, robust manufacturing, a minimum number of more reliable and durable parts).
- Reduced operating costs (less frequent overhauls, lack of or minimum down time, etc.).
- Lower administrative costs (coordination, follow-ups, supervision) due to much less frequent breakdowns.
- Safe design can prevent serious or even fatal accidents.
- Increased comfort and productivity of personnel.



MAXIDRIVE™ The right fan for source extraction

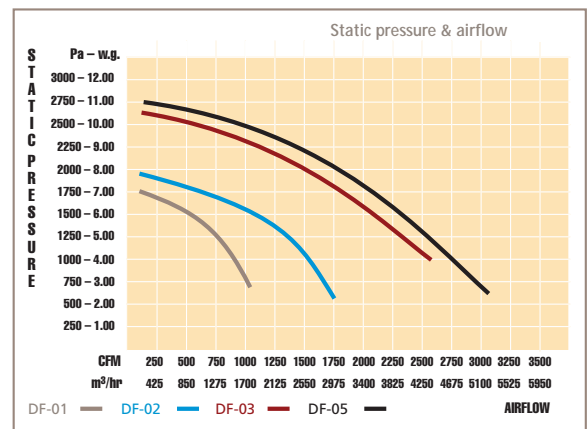
Powerfull, rugged and maintenance free

Most of our competitors do not include these standard features:

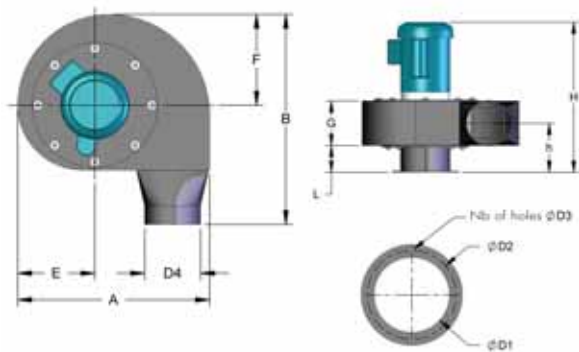
- Multi purpose for source capture
- 3450 R.P.M. direct drive design with T.E.F.C motors
- Aluminum backward inclined impeller with steel housing for spark-proof design
- Adjustable orientation air discharge
- Powder coat painted housing
- Duct flange connection included
- Inlet cone for maximum suction
- Inlet and outlet wide mesh protective screens



Typical applications for Maxidrive extractor fan



Maxidrive fans (3450 R.P.M.)



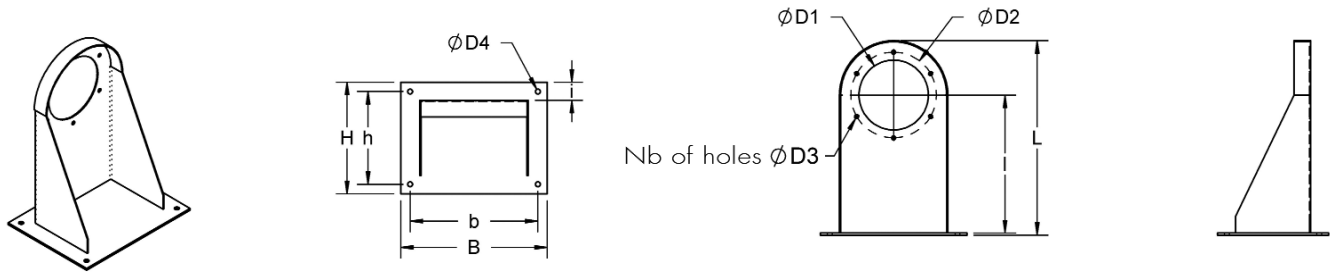
DB level chart to come

Fan dimensions

CHART 1

Model	Power [HP] / [Kw]	Dimension [inches] / [mm]											Weight [lbs] / [kg]		
		A	B	E	F	H	L	G	h	d1	d2	d3		d4	n
DF-01	1 / 0.75	20.2 / 513	22.6 / 574	8.3 / 211	9.8 / 249	21.1 / 536	3.9 / 99	5.9 / 150	6.9 / 175	6.25 / 160	7.69 / 195	0.4 / 9	6 / 198	6	70 / 31.8
DF-02	2 / 1.50	22.7 / 577	24.8 / 630	9.2 / 234	11 / 279	24.8 / 630	4.9 / 124	6.3 / 160	7.4 / 188	8 / 200	9.69 / 246	0.4 / 9	8 / 249	8	82 / 37.3
DF-03	3 / 2.25	25.6 / 650	27.3 / 693	10.4 / 264	12.5 / 318	25.4 / 645	4.9 / 124	6.9 / 175	8.4 / 213	10 / 254	11.38 / 289	0.4 / 9	10 / 302	8	96 / 43.6
DF-05	5 / 3.55	25.6 / 650	27.3 / 693	10.4 / 264	12.5 / 318	27.3 / 693	4.9 / 124	7.8 / 198	8.8 / 224	12 / 305	13.5 / 343	0.4 / 9	12 / 302	8	166 / 75.5

Maxidrive fan support bracket dimensions



Bracket dimensions

CHART 2

Model	Power [HP] / [Kw]	Dimension [inches] / [mm]											Weight [lbs] / [kg]	
		D1	D2	N	D3	D4	L	I	H	h	B	b		i
DF-01	1 / 0.75	6.25/160	7.69 / 195	6	0.28 / 7	0.43 / 11	17.44 / 443	12.38 / 314	10 / 254	8.31 / 211	13.19 / 335	11.5 / 292	1.75 / 44	11 / 5
DF-02	2 / 1.50	8 / 200	9.69 / 246	8	0.35 / 9	0.43 / 11	22.44 / 570	15.25 / 387	11.88 / 302	9.75 / 248	15.5 / 394	13.63 / 346	2 / 51	13 / 5.9
DF-03	3 / 2.25	10 / 254	11.38 / 289	8	0.35 / 9	0.43 / 11	22.44 / 570	15.25 / 387	11.88 / 302	9.75 / 248	15.5 / 394	13.63 / 346	2 / 51	15 / 6.8
DF-05	5 / 3.55	12 / 305	13.5 / 343	8	0.35 / 9	0.43 / 11	26.31 / 668	18.38 / 467	11.88 / 302	9.75 / 248	18.13 / 460	16.13 / 410	2 / 51	21 / 9.5

Create your Maxidrive exhaust fan specification

- Fan model to be
 - A) DF-01 (1 H.P.)
 - B) DF-02 (2 H.P.)
 - C) DF-03 (3 H.P.)
 - D) DF-05 (5 H.P.)
- Voltage to be:
 - 115/1 / 60
 - 230/3 / 60
 - 230/1 / 60
 - 460/3 / 60
 - 575/3 / 60
- Fan to have air volume and static pressure capacity as per manufacturer's fan performance curves
- 11 and 14 gauge powder coat painted steel housing.
- A) Aluminum impeller to be of grade 5052 and backward inclined.
 - B) Powder coat painted steel impeller for temperatures above 400 °F [205 °C]
- Inlet cone to be included
- Fan to be included with support bracket model
 - A) WBF-06 (1 H.P.)
 - B) WBF-08 (2 H.P.)
 - C) WBF-10 (3 H.P.)
 - D) WBF-12 (5 H.P.)
- Fan to include wide mesh protective screens at inlet and outlet
- Motor cover for exterior installation
- Outlet silencer

One of kind warranty

A.Q.C. Inc. will guarantee their products against defects in material and workmanship for a period of 27 months from product ship date.

Your A.Q.C. representative is:



To obtain a free copy of our full-colour corporate brochure, please call: **1-866-629-4356**

660, de la Sabliere, Bois-des-Filion (Quebec) Canada J6Z 4T7
 Tel.: 1-866-629-4356 • Fax: (450) 621-6677
 Web site: www.aqc dust.com • e-mail: info@aqc dust.com